



GRiDCASE 2500 Rugged Tablet

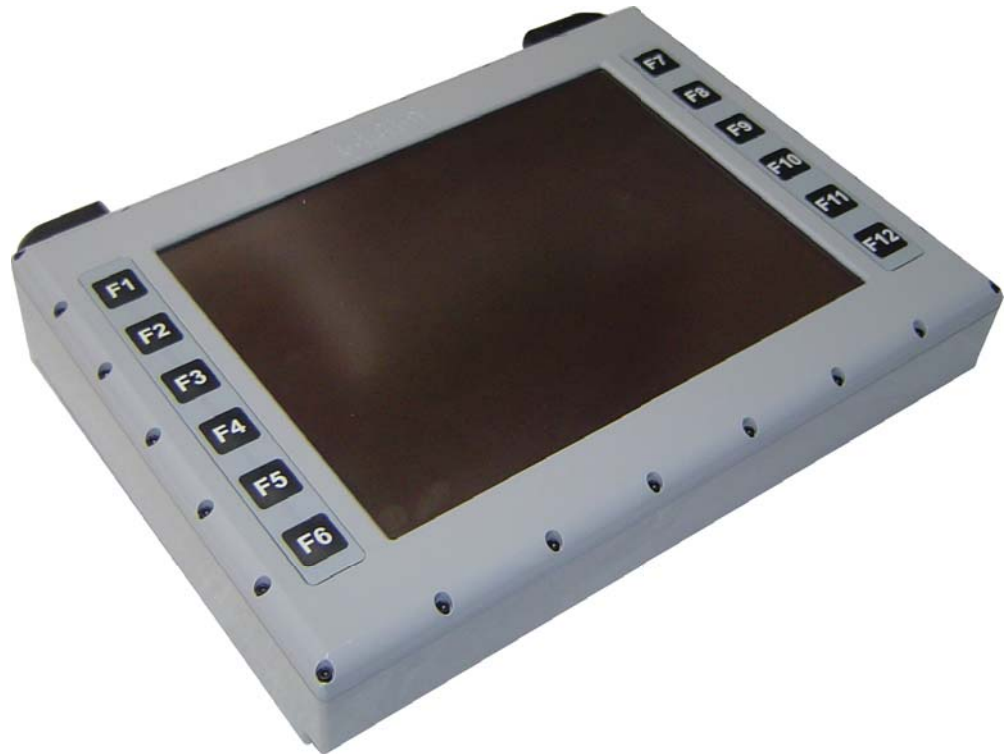
The GRiDCASE 2500 Tablet is designed to comply with all military specifications for Environmental and EMC requirements and is housed in a fully sealed IP67 Aluminium chassis.

The system is designed to be easily configured to suit project specific requirements by means of customisation of the rear panel. This can be configured with a wide range of military connectors including D38999 and 62GB.

The system is powered by an Intel Core2Duo CPU with up to 4GB of RAM. A 10.4" TFT LED Backlit display panel is fitted with support for up to 1024x768 pixel resolution. Data entry is made via a Touch-screen and 12 configurable function buttons. Data storage is provided by either booting from a Rugged Externally Accessible USB Flash Drive or a fixed internal Solid State Drive. Multiple I/O ports including Ethernet, RS232/422/485, USB, SDLC/HDLC, 1553 bus and Composite Video are available for connectivity. Networking options include up to nine 10/100/1000Mb Ethernet and 802.11g Wi-Fi wireless.

For system security the BIOS can be locked to prevent user access to CMOS settings by password protection which combined with single boot device configuration prevents unwanted access to the system. Data encryption up to SECRET to HMGCC CAPS accreditation can also be provided. The system is available in TEMPEST certified form for compliance with AMSG788.

The system is fully accredited with a wide range of military specifications including Def Stan 59-411 (MIL-STD-461) Air Class, Land Class and Above Decks Limits, Def Stan 00-35 (MIL-STD-810) and Explosive Atmosphere Zone 2 Cat 3.



Features:

- Def Stan 59-411 (MIL-STD-461)
- Def Stan 00-35 (MIL-STD-810)
- TEMPEST
- IP67
- ATEX IIc + JSP4 82
- Shock Resistant
- Intel Celeron and Core2Duo
- Custom Build
- Configurable Function Buttons
- Mid Life Upgrade Path
- British Design & Build
- Long Product Life
- Long PDS and Maintenance Contract Support

Contact:
GRiD Defence Systems
Highbridge House
93-96 Oxford Rd
Uxbridge Middlesex
England UB8 1LU
+44 (0)1895 230650
+44 (0)1895 236720
grid-sales@griduk.com
www.griduk.com



GRiDCASE 2500 Rugged Tablet

Service and Support:

1 Years Warranty included with up to 10 years extended warranty available

Military Features:

Fully Sealed Casework
MIL-SPEC Connectors
MIL-STAN 810
MILS STAN 461
DEF STAN 59-411
DEF STAN 00-35

Expansion:

PCI-104

Encryption:

Software or HDD Encryption

Ports:

Ports are configurable and include:

RS232
RS422
RS485
External VGA
eSATA
USB 2.0
PS/2
Audio

Further interfaces are available.

Communication:

Intel 10/100/1000Mb Gigabit Ethernet

Casework:

DuraCase III Aluminium Alloy

Size:

300 x 242 x 61.5 (W x D x H)

Weight:

3Kg

Temp:

-20°C - +55°C

Humidity:

0-95% Non-Condensing

Processor Options:

Intel® Core™2 Duo SU 9300 Ultra Low Voltage, 1,2 GHz
Intel® Celeron® Processor 722 Ultra Low Voltage, 1,2 GHz
Intel® Core™2 Duo with latest energy-saving 45nm technology
Other Intel® Processors are available

Chipset:

Intel® GS45, Intel® ICH9M SFF

Memory:

2048MB of DDR3 SO-DIMM 1066Mhz Memory
Option for up to 8GB of DDR3 SO-DIMM 800/1066Mhz Memory

BIOS:

Phoenix with GRiD Extensions and full ACPI support

Graphics:

Intel® X4500MHD including up to 1024MB of Graphics Memory
(With 64 bit Core2Duo)

Display:

10.4" 1024x768 TFT Sunlight Readable
Touchscreen
LED Backlit for low power consumption

Keyboard:

12 Configurable Function Keys (F1 to F12)
Keypad artwork can be designed to suit user requirement

Power Input:

18-32V DC, MIL-STAN 1275
AC-DC power Supply included for lab use
Rugged AC-DC Power Supplies available

Battery:

2 to 4 Hours Battery Life

Operating System:

Microsoft Windows 7
Microsoft Windows XP Professional SP3

HDD:

SATA Fixed or Removable 2.5" Extreme Hard Disk Drive
Solid State Drive options available

